



Information Handbook





What is Percussion Ensemble 3

Time Management..... 4

Goal Setting..... 4

Commitment..... 4

Auditioning..... 4

Financial Commitment..... 4

 Estimated Fees 5

Rehearsals 5

Internal Structure..... 5

 Fundraising Coordinator 5

 Travel/Logistics Coordinator 5

 Championships Coordinator 5

 Equipment Manager 6

 Props/Floor Manager 6

 Chaperones 6

Termination of Membership Guidelines..... 6

Information Handbook Confirmation of Receipt..... 8



Welcome! We are excited that you have to continue to invest in the Karns Middle School Band family. The purpose of this document is to provide members and their parents an overview of our process and expectations.

What is Percussion Ensemble

A Percussion Ensemble program is not only educationally sound; it can have a dramatic and positive influence on the total Band Program. In a school situation, the Percussion Ensemble is a co-curricular or extra curricular activity which offers participation to both boys and girls. Usually, its purpose is similar to that of a sports team:

- To strive for EXCELLENCE
- To develop TEAMWORK
- To learn SPORTSMANSHIP
- To achieve the highest possible Ranking in your Competitive circle
- TO ENTERTAIN

Unlike sports teams, the entertainment factor makes this program unique. It can be compared to theater with elements of a drama, or a musical. This added dimension provides the students with an exposure BEYOND that offered through the band program. Thus, the indoor opportunity is a blend that produces "THE SPORT OF THE ART" which is Winter Guard International's slogan.

A valuable experience for Percussion Ensemble Performers is in interaction with students from other communities throughout the South East. This social and competitive exchange with groups of their own age from different backgrounds, lifestyles, and educational experiences adds another facet to their SELF-PERCEPTION while creating LAST FRIENDSHIPS!!

Percussion Ensemble has the latitude to perform at a local level with much the same scope as an athletic team, or they may choose to expand to include performances in other parts of the country affording an opportunity for trips visiting historical and cultural sites.

Very few co/extra-curricular activities offer students an experience which challenges and stimulates growth on so many levels:

- MULTI-PHYSICAL
- MENTAL
- SOCIAL
- TIME SEQUENCE
- THOUGHT ORGANIZATION
- TEAM WORK
- GROUP COOPERATION

The activity demands physical involvement in rehearsal and performance involving muscle tone, conditioned response to music and other stimuli, simultaneous coordination of head, arms, legs, body stature as well as POISE and CONTROL while experiencing physical and mental pressure.



A Percussion Ensemble program will expand the techniques of those who comprise the percussion sections within the band in just the same way that jazz band continues the development of those skills with subsequent impact on the excellence of the Music Program as a whole.

Competition in and of itself generates a divided position on the part of many educators who fear a misplaced focus on winning at any cost. Because WGI is based on Education, that subject has had careful study and ongoing scrutiny. Competition in this arena is the means whereby we teach the following:

- Recognition & appreciation of the achievements of your competitors
- A barometer whereby you measure achievement against a set of standards
- A means to recognize your own potential by achieving more than you thought you could
- Putting "competition" in a light of discovery and growth rather than "winning" as the priority

Competition exists in today's world in every walk of life. To prepare our youth with techniques that will keep this aspect in a healthy focus while discovering and enjoying their own excellence may be our greatest gift to them.

Time Management

Time management is one of the many skills gained from being involved in the band program. There are going to be designated rehearsal times for the unit to prepare for performances. There is a need for each member to assess and manage their personal time in order to work on personal goals. There will also be times designated for fundraising in order to provide the best equipment for our members.

Goal Setting

As a staff, we provide skills to enhance performance as well as to succeed outside the program. Our members will be engaged in team building activities and goal setting exercises that will help you achieve goals in percussion ensemble and other activities.

Commitment

Commitment is a very large word in our vocabulary. The previous mentioned aspects are nothing by themselves. In order to achieve, commitment is essential. Our commitment motto is: "I did everything I possibly could to make myself and my team better." This also pertains to parents and their support of their student in this commitment.

Auditioning

There will be clinics prior to an audition. The audition will consist of materials in the clinic handbook and items covered within the clinic rehearsals.

Financial Commitment

The financial commitment is also a necessary evil in our activity. The commitment does not only pertain to band fees and charges associated, it also is a commitment to participate in certain fundraising activities to help cut some of the costs that will eventually lower member dues.



Estimated Fees

Percussion Ensemble Member fee - \$225

Uniform - \$70 *Will be the property of the member once the season is complete*

Shoes - \$35

A Payment Schedule will be distributed during audition/clinic week.

Rehearsals

All rehearsals are **mandatory** after the audition. The winter rehearsal and performance schedules will be posted once the ETPAA schedule has been posted. The purpose of having rehearsals in November and December is to place as much attention to detail to the show prior to the competitive season.

No chewing of gum or eating of food during rehearsal times. These are allowed during long breaks and outside the rehearsal facility.

No pagers or cell phones allowed functional during rehearsal times.

Emergency contact numbers are provided on this document for rehearsal and performance events. During Breaks members will of course be able to check their devices for any information from parents.

Rehearsal and performance facilities will be kept clean and maintained.

Karns Middle is fortunate to have such a wonderful facility. It takes some time to prepare for each rehearsal as well as restoring the band room to its original setting.

Internal Structure

With Percussion Ensemble, it takes a great deal of participation amongst the members and their parents to truly be successful. To assist in the success of the winter program, there will be a Percussion Ensemble Support Committee that will assist in the organizational day to day functions. This will consist of members and parents. Their purpose is to assist.

Fundraising Coordinator

This position is responsible for coordinating and tallying fundraising efforts in cooperation with the Band Director.

Travel/Logistics Coordinator

This position is responsible for coordination transportation to and from each performance during the regular competitive season. This does not include Championships. Scheduling of rehearsal time, loading of equipment time, travel time and prep time at performance site will be handled by this individual. Also, directions and information concerning each performance site will be accumulated and dispensed to the organization and parents prior to each performance. Director and Staff of KMS has extensive experience to guide this person. The need is for an individual to be responsible each week in the season for the updates to the group.

Championships Coordinator

This is a co-parent/member position. This co-position will include one parent and one member to have the best perspective on how the ensemble will get to ETPAA Championships. This position will work closely with the Percussion Ensemble Director and the Band Director in planning the event.



Equipment Manager

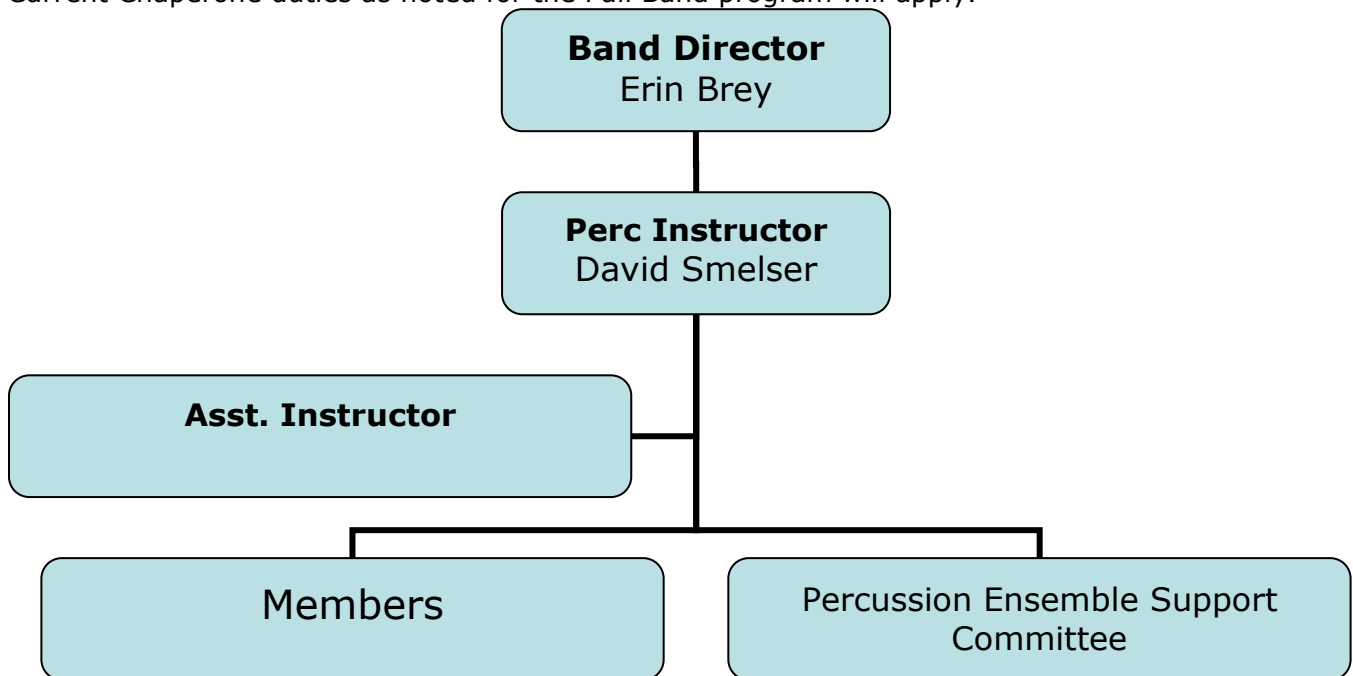
This is a co-member position. This position will consist of two members who will be responsible for the management and overall care of our equipment. They guarantee each piece of equipment is loaded and performable prior to each performance. This includes the checking, and repair if necessary, of the front ensemble equipment, electronics, battery instruments to comply with the circuit guidelines.

Props/Floor Manager

This is a co-parent/member or student position. This position will consist of at least one parent and one student organizing and executing the prop construction, transporting, and setup/break down at each performance. Members will be expected assist when necessary.

Chaperones

At least 2 Chaperones per trip taken by the Percussion Ensemble will be utilized. Current Chaperone duties as noted for the Full Band program will apply.



Termination of Membership Guidelines

As we are a representation of the Band Program and the School, there will be professionalism guidelines that determine your future as a member. Just making it through the audition goes not guarantee you a position for entire season. The terms are as follows:

- 3 Strikes your out – miss 3 rehearsals and your spot will be filled with someone else
- Miss ANY performance (excused are those misfortunate family deaths or illnesses that prohibit you being around a group of people and not fully functional) Please contact the Director or Percussion Instructor before scheduling such test if a conflict looks eminent.



- ❑ 6 Tardy arrivals to rehearsals or performance without prior consent by the Director or Percussion Instructor will result in immediate suspension of participation until a parent/staff/member conference can be held to determine future commitment
- ❑ **Receiving In School or Out of School suspension.** These acts misrepresent the group. BE IT KNOWN that members receiving these disciplines will be removed from the group. That includes those assisting in a support role.

Any dismissal from the group on the above grounds forfeits any and all dues paid. Termination on behalf of the member or parent forfeits any and all dues paid. Refunds will only apply to uncontrollable circumstances.

We will be **respectful** and **respected**. Every student should want to be involved in this program based off of your example. Words mean nothing, actions mean everything.

These are just a few thoughts to get everyone started on what we do in Percussion Ensemble at KMS. There will be other organizational documents in the future that may need to be completed <*Physical Forms*>. Band, school, county, and state handbooks and guidelines supercede this document.

You must have a completed, updated medical information form on file with the Karns Middle Band in order to participate.

Thanks and I look forward to working with all of you!

David Smelser
Percussion Ensemble Instructor



Information Handbook Confirmation of Receipt

Please return this portion to any member of the staff after you have read and understood the contents.

Member Name: _____

Parent Name: _____

Signature: _____

Signature: _____

Date: ___/___/___

Date: ___/___/___

Thank You!!